

**County of Emmet**  
**Office of the Administrator**  
**200 Division Street, Suite G92**  
**Petoskey, Michigan 49770**  
**231-348-1701**

---

December 22, 2020

**Subject:** Investigation of Per- and Poly-Fluoroalkyl Substances at the Pellston Regional Airport

Dear Homeowner / Property Owner:

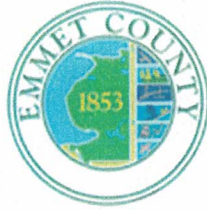
Emmet County is providing this letter to update you on an effort being undertaken to investigate per- and poly-fluoroalkyl substances (PFAS) at the Pellston Regional Airport (PLN). On July 1, 2020, Emmet County was awarded a \$250,000 Michigan Department of Environment, Great Lakes, and Energy (EGLE) grant to investigate the presence of PFAS at PLN associated from the historical use of aqueous film forming foam (AFFF) for firefighting purposes.

PLN is certified by the Federal Aviation Administration (FAA) as a commercial service airport. Per this certification, PLN is required to meet certain operational requirements which includes the provision of firefighting and emergency response services. This includes the required use of firefighting foam containing fluorocarbon surfactants (e.g., PFAS).

PFAS are a family of over 5,000 chemical compounds that have been used in a variety of materials and industrial processes since the 1940s. Due to their water-repellant, stain-resistant, non-stick, and surfactant properties, they are used in a variety of products. These include paper tableware, food packaging, commercial household products (stain- and water-repellent fabrics, nonstick products, polishes, waxes, paints, cleaning products), industrial processes (chrome plating, electronics manufacturing, oil recovery), and in AFFF used for airport firefighting purposes.

With the award of the EGLE grant, Emmet County recently completed the first phase of an **investigation effort to determine** the presence of PFAS in groundwater at PLN. Enclosed is a graphic that identifies the locations where ten (10) groundwater samples were taken at five (5) sites where historical use of AFFF occurred as reported in PLN records. This graphic also identifies the locations where an additional ten (10) groundwater samples were also collected along the West Branch of the Maple River.

Evaluation of the type of PFAS compounds found in the groundwater samples confirmed the presence of perfluorooctanoic acid (PFOA) and perfluorooctane sulfonate (PFOS). The following summarizes the detection of PFOA and PFOS in groundwater at the historical AFFF use sites and along the West Branch of the Maple



River. Please note that while PFAS has been detected, some of the samples do not meet the threshold of requiring some action to be taken.

- PFOA was detected at four (4) of the five (5) historical AFFF use areas, with samples at three (3) use areas above Part 201 criteria.
- PFOS was detected at all five (5) historical AFFF use areas, with three (3) use areas having samples above Part 201 criteria.
- PFOA was detected in three (3) of the ten (10) samples taken along the West Branch of the Maple River, with two above Part 201 criteria.
- PFOS was detected in five (5) of the ten (10) samples taken along the West Branch of the Maple River, with none above Part 201 criteria.

These results have been reported to Michigan EGLE. Emmet County is currently cooperating and working closely with EGLE to determine the next phase of the investigation effort to determine any potential impacts these findings may have to local drinking water supplies.

Additional information about the ongoing investigations of PFAS at the Pellston Regional Airport can be found on the Michigan PFAS Action Response Team (MPART) website at: [https://www.michigan.gov/pfasresponse/0,9038,7-365-86511\\_95600\\_95632-546670--,00.html](https://www.michigan.gov/pfasresponse/0,9038,7-365-86511_95600_95632-546670--,00.html)

As subsequent phases of the PFAS investigation are conducted, project status updates will be provided on the MPART website and made available to residents of the village of Pellston. In the meantime, if you have any questions about the ongoing PFAS investigation at the Pellston Regional Airport, please contact Mr. Michael Reaves, County Administrator, through e-mail at [mreaves@emmetcounty.org](mailto:mreaves@emmetcounty.org) or by phone at (231) 348-1701.

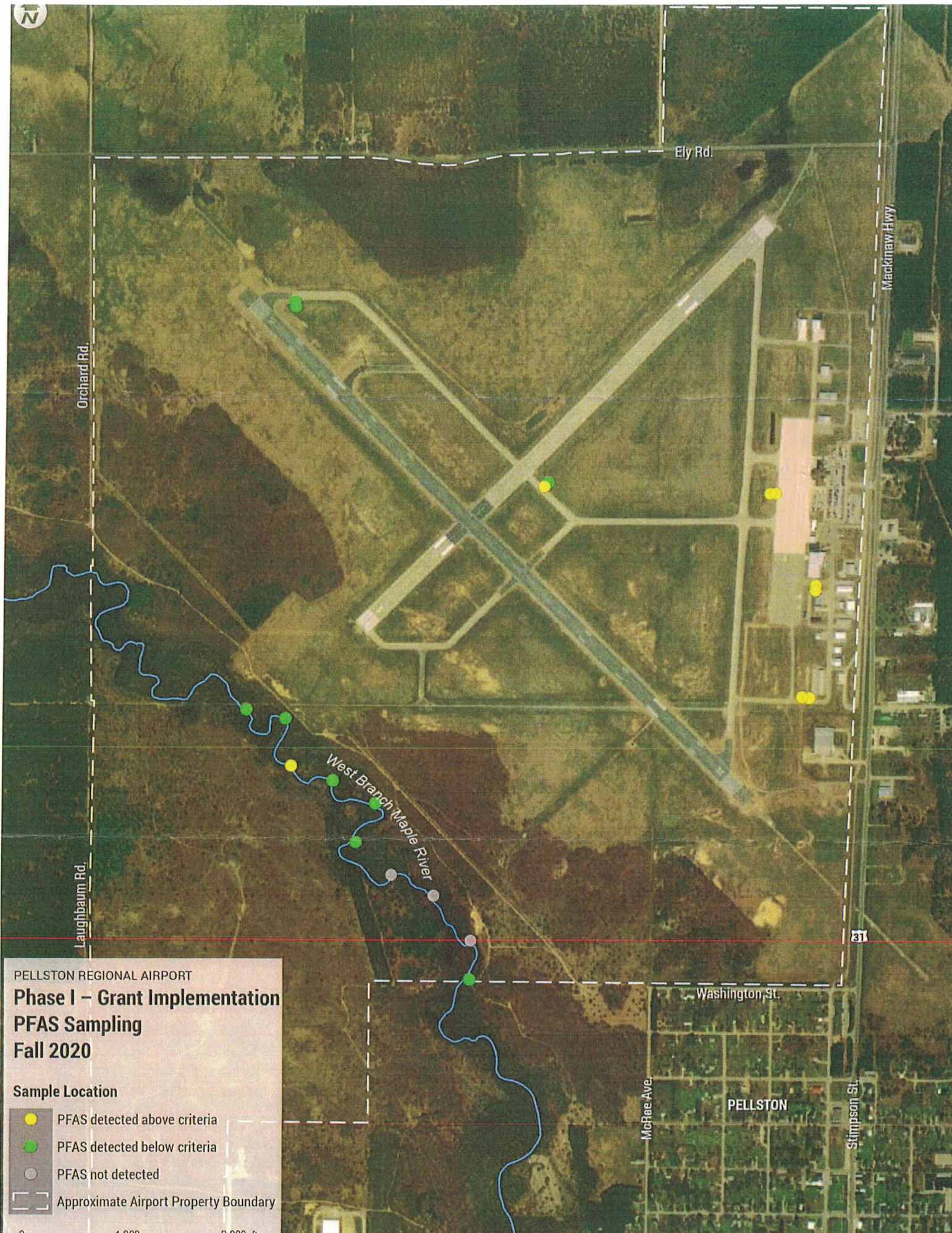
Sincerely,

A handwritten signature in blue ink, appearing to read "Michael Reaves".

Michael Reaves  
County Administrator





Enclosure





PELLSTON REGIONAL AIRPORT  
**Phase I – Grant Implementation**  
**PFAS Sampling**  
**Fall 2020**

**Sample Location**

-  PFAS detected above criteria
-  PFAS detected below criteria
-  PFAS not detected
-  Approximate Airport Property Boundary

0 1,000 2,000 ft